

# ARTWORK APPROVAL

Artwork should be produced at 300dpi at scale. Images such as jpg and png files are low resolution by nature and can contain background 'noise' which can affect the final print quality.  
Where possible, please use vectored graphics.

**Product:** Promotional Tea towel - Black  
**Quantity:** N/A

**Product Description:** TearAway label for ease of rebranding.  
Corner tab for hanging. BSCI certified. Reach certified.  
(size 50 x 70cm)

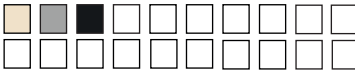
**Process:** Direct-to-film (DTF)  
**Date:** 12/12/24

**Artwork Scale** 9%  
**Actual Artwork Size** 470mm x 670mm

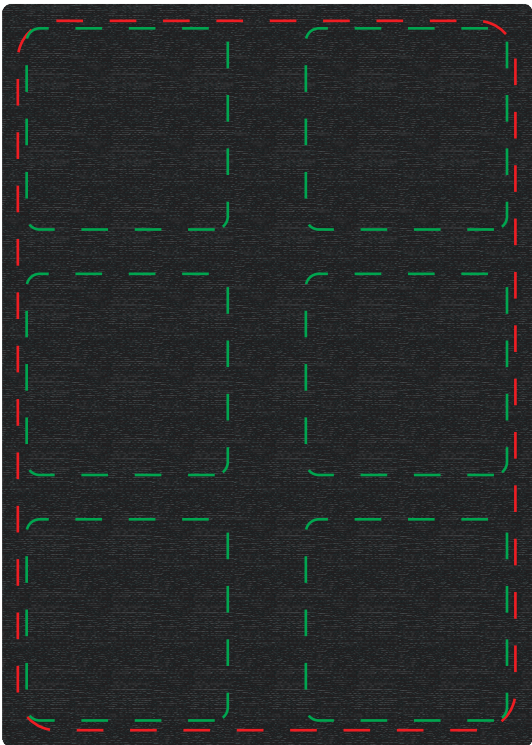
**Artwork Advisory**

Detail must be at least 1pt (0.353mm) thick.  
Text should be minimum 8pt to remain legible.  
Light text on a dark background will reproduce better if bold.  
\*Due to variations beyond our control and the nature of the print process the colour on the pdf may differ from that on the final product, and the print position may vary by 2 - 3 mm\*

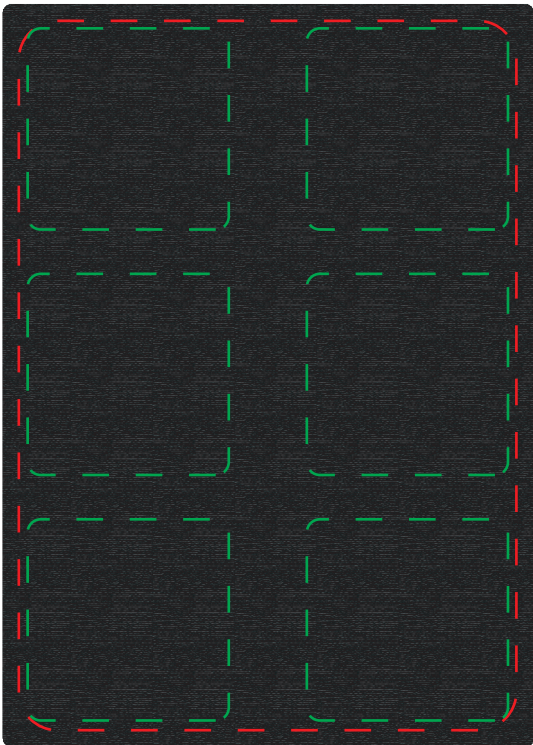
We stock this item in the following



Full Colour Printing



Front



Back

The dashed line is to demonstrate print area and will not appear on your printed item

## Print Area

- DTF Print area - 470mm x 670mm
- Embroidery Print area - 190mm x 190mm

Please check the following are correct

QUANTITY ☒ CORRECT PRODUCT and PRODUCT COLOUR ☒ PRINT SIZE and POSITION ☒ PRINT COLOUR ☒ SPELLING, PHONE NUMBERS, EMAILS and WEBSITES ☒

Any special print requirements must be advised at approval stage, however a new visual may have to be done and approved which may affect the lead time. We may at times advise you of our concerns with regard to the print or print colour on the pdf proof - if approval is given this is unfortunately at your own risk. If a photograph is required of the item this may be chargeable and this is quite often done on day of despatch and could delay your order if approval isn't received immediately.

We cannot accept liability for errors, however caused, which are evident in the proof and not indicated by you at this stage. You are liable for all relevant costs incurred in correcting such mistakes once the proof has been approved. Please note: Your order will not go into production until this proof is approved in writing. This product may have more than one print area, please check to ensure the print position is correct as mistakes cannot be rectified once the goods have been printed. Due to the restrictions and constraints of printing, we can only use 'coated' ink, therefore your pantone reference will need to be a 'C' code. Please double check the pantone colour against a coated pantone book before approving the artwork. The colour and texture of a product can also have an effect on the final print colour.

To proceed, please reply back to sender clearly stating that the proof is approved